



MATERA

Signature

Gading Serpong

The Ultimate Luxury Living



PARAMOUNT LAND
Building homes and people with heart

GADING SERPONG

Located approximately 18 kilometers on the western side of Jakarta, Paramount Gading Serpong is an independent city that has become a new economic hub and a residence for over 120,000 residents. This city is positioned in a highly strategic location, surrounded by large development areas, and is connected to the Jakarta-Merak toll road, Serpong-Balaraja toll road, and JORR 2 Jakarta-Serpong toll road, providing direct access to Jakarta, Soekarno-Hatta International Airport, Merak Port, and other major cities in Jabodetabek.

Paramount Land, one of the main developers of Gading Serpong City, professionally manages this area covering approximately 1,000 hectares and develops residential, commercial, and recreational facilities, along with city infrastructure and a variety of other amenities ranging from educational facilities such as schools and universities to hotels and hospitals. The increasing value of the city is reflected in the rapid growth rate of Gading Serpong, which has reached 15% (YoY).

Based on comprehensive and up-to-date research, Paramount Land continuously presents a variety of property products that meet the interests and needs of the community over time. To date, there are more than 40 inhabited clusters for middle to upper-class communities, equipped with the best utilities, infrastructure, and amenities. Matera Residences, Pasadena Grand Residences, and Menteng Grand are some of the exclusive residential projects by Paramount Land that have received a positive response from the public.

High connectivity and accessibility have boosted the development of commercial and business areas in Gading Serpong, which has become a favorite destination for the Tangerang Raya community and Jabodetabek. Paramount Land plays a significant role in developing culinary and business centers, including the commercial area in the southern part known as 'The Most Vibrant Commercial' in Gading Serpong, featuring over 250 businesses, from Maggiore, Sorrento, Pisa Grande, Mendrisio, and surrounding areas. Paramount Land is also developing the Manhattan District, the largest commercial epicenter in Tangerang Raya, covering an area of 22 hectares.

Paramount Land is developing Gading Serpong City as a one-stop solution for fulfilling daily needs, ranging from living, working, conducting business, recreation, to investment. Through Paramount Estate Management, Paramount Land also professionally manages, organizes, and maintains the city sustainably, serving and upholding community harmony in Gading Serpong through various flagship programs. This reflects Paramount Land's commitment to continue growing together with the community, in line with the company's tagline, 'Building Homes and People with Heart.'

DISTINGUISHED ACHIEVEMENTS OF PARAMOUNT LAND



BEST COMMERCIAL DEVELOPER
PROPERTYGURU ASIA PROPERTY AWARD 2023

**BEST TOWNSHIP DEVELOPER
(ASIA)**

PROPERTYGURU ASIA PROPERTY AWARD 2024

BEST TOWNSHIP DEVELOPER
INDONESIA PROPERTY AWARD 2024

+ BEST TOWNSHIP DEVELOPER (ASIA) 2024 + BEST TOWNSHIP DEVELOPER 2024 + BEST HOUSING ARCHITECTURAL DESIGN 2024 + BEST SMART HOME DEVELOPMENT 2024 + BEST WELLNESS RESIDENTIAL DEVELOPMENT 2024
+ BEST HOUSING LANDSCAPE DESIGN 2024 + BEST CHOICE HOME DESIGN 2024 + BEST URBAN ARCHITECTURAL DESIGN + BEST ECO FRIENDLY HOUSING DEVELOPMENT + BEST HIGH END HOUSING DEVELOPMENT
+ BEST COMMERCIAL DEVELOPER (INDONESIA) 2022 + BEST INNOVATIVE COMMERCIAL PROJECT 2024 + BEST COMMERCIAL DEVELOPER 2023
+ BEST HIGH END HOUSING DEVELOPMENT (GREATER JAKARTA) 2023 + THE MOST INNOVATIVE COMMERCIAL DEVELOPMENT 2023 + DEVELOPER OF THE YEAR 2023 + TOP 10 DEVELOPERS 2022
+ FAVORITE HOUSING PROJECT 2022 + BEST ECO-FRIENDLY HOUSING 2023 + BEST LOW RISE COMMERCIAL 2023 + BEST PREMIUM HOUSING PROJECT 2023 +





BEST HIGH-END HOUSING DEVELOPMENT (GREATER JAKARTA)



BEST CHOICE HOME DESIGN (2024)



BEST SMART HOME DEVELOPMENT (2024)



BEST WELLNESS RESIDENTIAL DEVELOPMENT (2024)

Crafted by Award-Winning Consultant Designers



SONNY SUTANTO ARCHITECTS

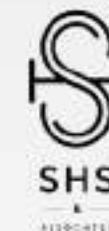
Sonny Sutanto Architects

An architectural consultant who has handled many projects, mostly hotels throughout Indonesia. In addition, it also handles residential projects (apartments).



Graha Cipta Hadiprana

A leading architectural and interior design consultancy. Experienced in architectural, hospitality, interior, and artwork design projects. For 60 years, it has been characterized by iconic & timeless design.



SHS & ASSOCIATES

Interior design consultant with more than 30 years of experience in the industry. Experienced in handling various interior & architecture design projects in Indonesia, including the board of directors office of PT Puncak Keemasan Lumbung Dunia at The Plaza Tower, Jakarta.



+SCAPE

Landscape & hardscape, and gate consultant. Experienced in working on major developer projects.



Darcaniya Cintra

Consultant for landmarks, landscape & hardscape, gates, street furniture, and clubhouse facilities. Experienced in working on major developer projects.



“A **Masterpiece** of Signature Living,
Crafted with Elegance in Every Detail.”



MATERA
Signature
Gading Serpong

Matera Signature is a luxurious residence in an exclusive and strategic location, with a variety of complete facilities for the comfort and convenience of meeting your needs. It is surrounded by lively commercial areas, shopping centers, education, offices, hospitals, and so on, making Matera Signature an area with high connectivity and easy access.

Being in an area with a well-planned and designed arrangement, Matera Signature carries the concept of "The Ultimate Luxury Living", both in terms of structuring the needs of complete, comfortable, and spacious interior space, selective and quality material selection, and the appearance of an elegant, magnificent and luxurious building facade.

Grand Fiore

Fiore means "Flower" in Italian. The Matera region represents "The Shining Flower Buds," symbolizing the beginning of beauty.

Ballerina

The regional landmark features an icon resembling a "Ballerina" silhouette that symbolizes timeless beauty.



Matera Diamond Gate

Welcome to Matera Signature, where a grand gate greets you. The intricate wall architecture features a diamond pattern and is made with premium materials, showcasing Matera Signature as a luxurious residential complex.



Green Jogging Track

Green Jogging Track

Matera Diamond Gate

Community Club

Facilities

ROW 28

Jl. Boulevard Matera

BSD



Healthy Living Environment

Experience the Matera Signature environmental garden, a luxurious landscape designed to promote a healthy lifestyle. Embrace the vibrant greenery and enjoy a serene environment where nature and comfort coexist perfectly.

"It's not just about the experience, but it makes you healthier as you can breathe fresh air whenever you want"



Luxury Amenities Community Club

The community club provides time and space for residents to interact socially and live more actively and recreationally in Matera Signature.

The community club at Matera Signature was established on an area of 5,000 m². It was designed with a spacious layout and consideration for comfort so as to create the impression that it "Reflects the glorious personality of the surrounding environment."



Multi-function Room



Putt-putt Golf



Infinity Swimming Pool & Kids Pool



Bowling Alley



Children Playground



Sport Hall



Exercise Area (Indoor & Outdoor)



Gym



Lounge (Indoor & Outdoor)



Billiard

MATERA COMMUNITY





Main Lobby



Sport Hall



Infinity Swimming Pool & Kids Pool

*Actual Photo



Indoor Exercise Area



Indoor Lounge



Children Playground



Outdoor Lounge



Putt-putt Golf



Bowling Area



Gym Area

*Actual Photo

*Actual Photo



Type 12x20

Corner & Standard



CORNER

Land Parcel
12 x 20

Land Area
Var

Building Area
347 m²

4 + 1 4 + 1 1 3



STANDARD

Land Parcel
12 x 20

Land Area
240 m²

Building Area
345 m²

4 + 1 4 + 1 1 3

Disclaimer: Semua data yang tertera dalam gambar ini merupakan informasi yang disajikan oleh PT Paramount Properties International sebagai informasi umum yang tidak dapat dijadikan dasar untuk keputusan investasi atau keputusan lainnya. Semua data yang tertera dalam gambar ini merupakan informasi yang disajikan oleh PT Paramount Properties International sebagai informasi umum yang tidak dapat dijadikan dasar untuk keputusan investasi atau keputusan lainnya. Semua data yang tertera dalam gambar ini merupakan informasi yang disajikan oleh PT Paramount Properties International sebagai informasi umum yang tidak dapat dijadikan dasar untuk keputusan investasi atau keputusan lainnya.



Type 10x20

Corner & Standard



CORNER

Land Parcel
10 x 20

Land Area
Var

Building Area
297 m²

4 + 1
4 + 1
1
3



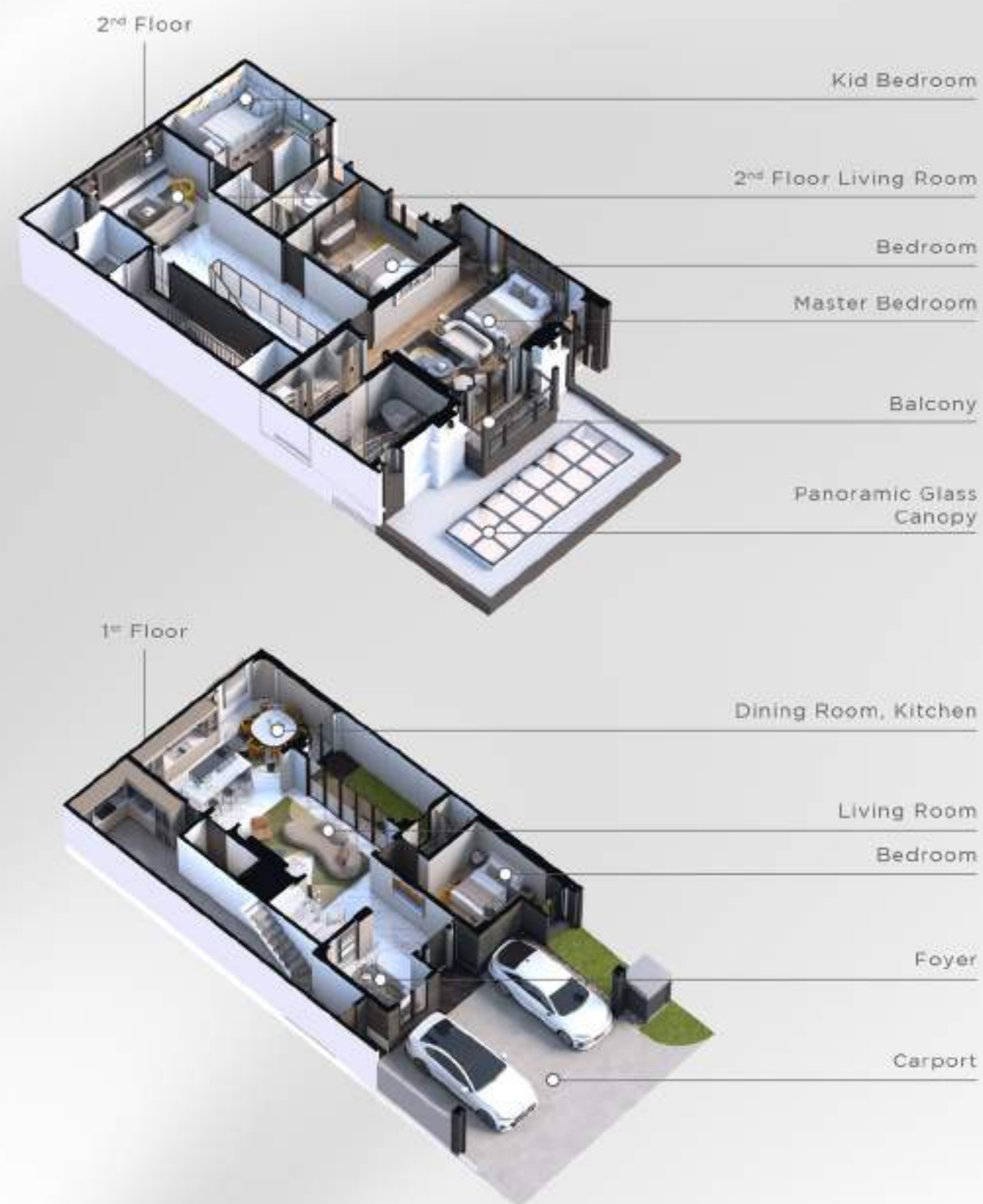
STANDARD

Land Parcel
10 x 20

Land Area
200 m²

Building Area
295 m²

4 + 1
4 + 1
1
3



-

Material Specification

GENERAL SPECIFICATIONS

EXTERIOR

Facade	Weathershield Exterior Paint Finish with Artificial Stone (ex.Quadra/equivalent), included Wall Lamp
Decorative Shade	Acrylic with Metal Galvanized Frame in Paint Finish.
Terrace/Balcony	Sintered Stone Slab ex.Quadra/Equivalent.
Carport	Homogeneous Tile ex.Roman Granit Hardrock/Equivalent.
Carport Canopy	Reinforced Concrete With Skylight (Hollow Frame Laminated Glass).
Outdoor Ceiling	Gypsum WR in Paint Finish.
Balcony Railing	Railing Frame Metal Galvanized in Paint Finish with Tempered Glass.
Window Glass	Low-E Glass

INTERIOR

General Wall	Interior Paint Finish.
General Floor	Sintered Stone Slab ex.Quadra/Equivalent.
Bedroom Floor	SPC (Stone Plastic Composite).
Bathroom Wall	Sintered Stone Slab ex.Quadra/Equivalent (Mosaic at Guest & Child Bathroom).
Bathroom Floor	Sintered Stone Slab ex.Quadra/Equivalent.
Service Area Floor	Homogeneous Tile.
Service Bathroom Wall	Ceramic.
Service Bathroom Floor	Ceramic.
Door & Window Frame	Aluminum ex.YKK/equivalent (Outside: Nexsta; Inside: Fility) with Architrave, except Service & Toilet Area.
Door Panel	Main Entrance Solid Engineering Wood with decorative pattern in Paint Finish.
Door Ironmongery	Interior Door - Solid Engineering Wood in Paint Finish.
	Main Entrance Smart Door Lock.
	Accessories Dekkson/Equivalent, Interior Door - ex.Dekkson/Equivalent.
General Ceiling	Gypsum in Paint Finish with Shadow Line.
Light Fitting	LED Downlight.
Sanitaryware	ex.KOHLER/Equivalent with Intelligent Toilet for Master Bathroom, except Service Area.
	Included Shower Partition Glass (Moru Glass with Metal Galvanized Stainless Frame).
Main Stairs	Solid Wood Handrail in Melamine Spray with Satin Finish + Tempered Glass.
	Main Stair Flooring with Sintered Stone Slab ex.QUADRA/Equivalent.
Service Stairs	Reinforced Concrete, with Metal Galvanized in Paint Finished Balustrade/Railing.
Kitchen	Sink ex.Franke/Equivalent, Top Table ex.QUADRA/Equivalent (Included Appliance: Kitchen Cabinet, Stove, Cooker Hood, PYUA Potable Water & Grease Trap) excluding Refrigerator.

TECHNICAL SPECIFICATIONS

Foundation	Piles.
Walls	Red Brick.
Structure	Reinforced Concrete.
Roof Frame	Light Steel ex. Bluescope/Equivalent.
Roof Covering	Bitumen Asphalt Tile.
Electricity	6.600 Va = L10.
	10.500 Va = L12.
	Solar Panel with Battery.
Solar water Heater	ex. Solahart/Equivalent.
Smart Home	Smart Home (CCTV, Wall Pad, Alarm, Smart Remote, Gas Leak Deflector, Dimmer, Bedroom Phone, Wireless touch Switch, Voice Control, Usb Socket in Every Bedroom).
Water Supply	PERUMDAM.

Siteplan



Legend

Type 12x20	Type 10x20
Show Unit	

Electrical Panel
Street Lights
Power House
Lightning Rod
Elevation

Special Features



EV Charging 3 Phase



Potable Water



Solar Panel System with Battery



Smart Home System



Solar Water Heater



Canopy with Skylight



Electric Socket + USB Socket



Grease Trap Capacity 50L



Smart Door Lock



CCTV

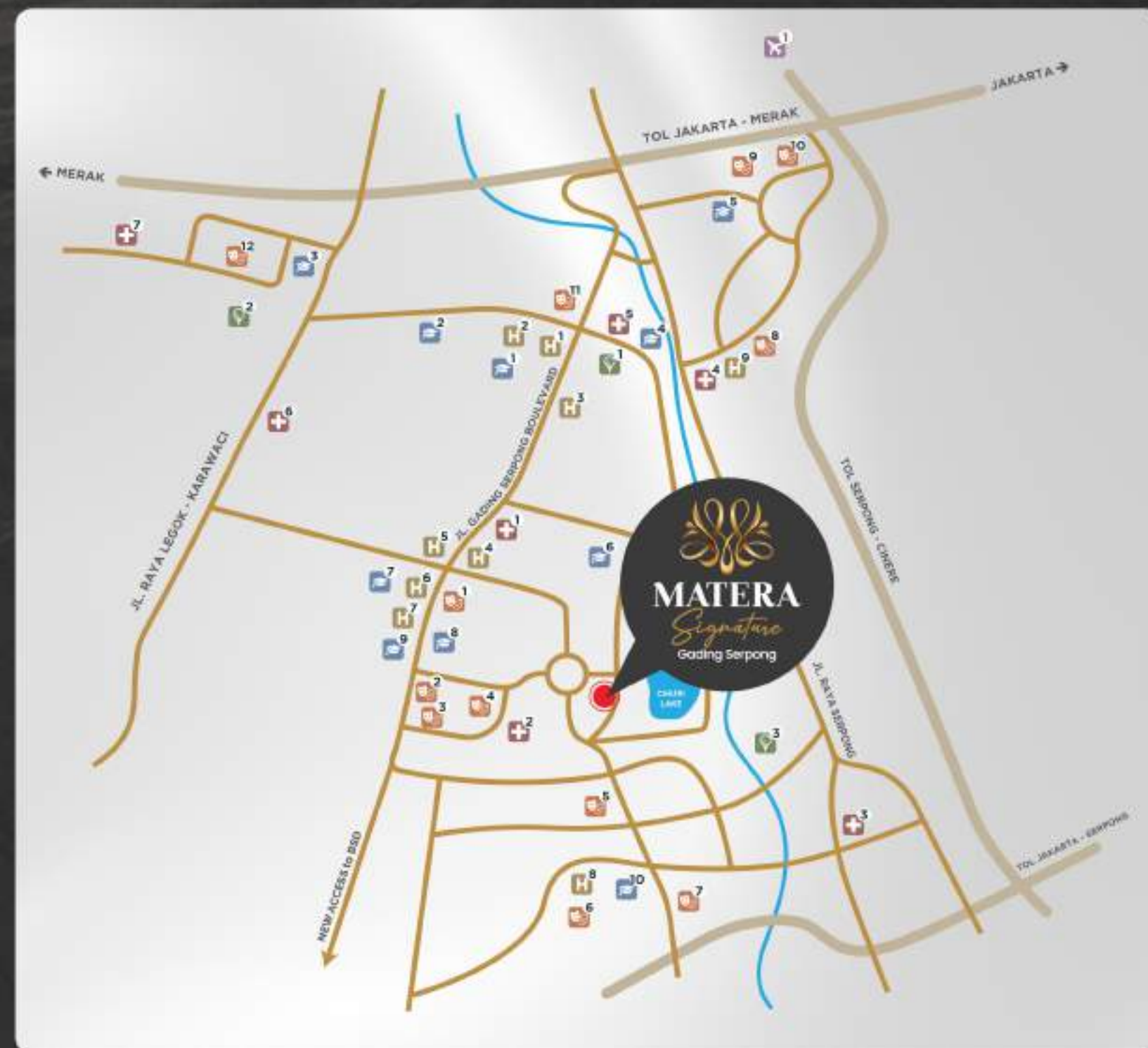


Leak Detector



Smoke Detector

Orientation Map



LEGEND

Golf Course

1. Gading Raya Gading Golf & Club
2. Imperial Klub Golf
3. Dermal Indah Golf

Medical Center

1. Bethesda Hospital
2. Bethesda Clinic
3. Eka Hospital
4. EMC Healthcare
5. St. Carolus Hospital
6. Mitra Keluarga Hospital
7. Sileam Hospitals

Mall & Eatery

1. BEZ Walk
2. Hampton Square
3. Black Owl
4. Papaya
5. Qbig
6. ICE BSD
7. AEON
8. Living World
9. Mall @ Alam Sutera
10. IKEA
11. Summarecon Mall Serpong
12. Supermal Karawaci

Educational Institutions

1. Mahkota University
2. Sekolah Tarakanita
3. Universitas Pelita Harapan
4. Sekolah Pahaia
5. Binus University
6. Syntara Islamic School
7. Universitas Multimedia Nusantara
8. Multimedia Nusantara Polytechnic
9. Pradita University
10. Universitas Prasetya Mulya

Airport

1. Soekarno-Hatta International Airport

Hotels

1. Atria Hotel
2. Vega Hotel
3. Ibis Hotel
4. Fame Hotel
5. JHL Solitaire
6. Episode Hotel
7. Qubika Boutique Hotel
8. Hotel Santika Premiere
9. Mercure Hotel



PARAMOUNT LAND
Building homes and people with heart

PARAMOUNT PLAZA Jl. Boulevard Raya Gading Serpong Kav. 1, Gading Serpong, Tangerang - 15810

 www.paramount-land.com  [@officialparamountland](https://www.instagram.com/officialparamountland)  [Paramount Land](https://www.youtube.com/ParamountLand)  [Paramount Land](https://www.facebook.com/ParamountLand)

Copyright 2025

Disclaimer: Semua data yang tertera dalam dokumen ini merupakan informasi yang bersifat umum dan tidak dapat dijadikan sebagai dasar pengambilan keputusan. Informasi yang tertera dalam dokumen ini adalah informasi yang bersifat umum dan tidak dapat dijadikan sebagai dasar pengambilan keputusan. Informasi yang tertera dalam dokumen ini adalah informasi yang bersifat umum dan tidak dapat dijadikan sebagai dasar pengambilan keputusan.